



ERBİL KORU ANATOLIAN HIGH SCHOOL.

**GUIDANCE and
PSYCHOLOGICAL
COUNSELING
SERVICE**



PRESENTATION CONTENT

- What is the Guidance Service?
- What is a Guidance Service Not?
- What Services Do We Offer in the Guidance Service?
- Our Principles
- Our Student Studies
- Our Parent Studies
- Our Teacher Studies

WHAT IS THE GUIDANCE SERVICE?



Our Guidance Service aims to help our students solve the difficulties they face during the development process without turning into problems, to contribute to their upbringing as happy, healthy, creative individuals with self-aware, sensitive adaptation to their environment and communication skills.



THINGS TO KNOW

- **Guidance services in Turkey are provided in kindergarten, middle school, high school and university.**
- **Guidance services are mandatory for schools with a certain number of students in schools.**
- **The school administration has to provide rooms and the necessary equipment for the guidance service.**
- **In order to become a school psychological counselor, you must graduate from the "Guidance and Psychological Counseling" department of universities and receive a 4-year education. If these 4-year trainees want to work in the public sector, they must take the KPSS (public personnel selection examination) exam. They can provide counseling services in private or they can also work in private schools. In these cases, the CV is important.**

The guidance service at our school follows the educational, professional and psychological development of students and makes the necessary referrals in cooperation with our teachers and parents during this process.

WHAT IS A GUIDANCE SERVICE NOT?



Psychological counseling and guidance assistance is not a one-way direct assistance to an individual.

Psychological counseling and guidance are not only concerned with the emotional side of the individual.

Guidance assistance is not just a help given to "troubled" students.

Psychological counseling and guidance do not have a magical power that can solve all kinds of problems immediately.

What an individual cannot do is not to do on his behalf.

It is not the center of discipline, judgment, punishment.

It does not eliminate the problem, it helps to solve the problem.



WHAT SERVICES DO WE OFFER?

What Services Are Offered in the Guidance Service?

The relationships of friends

The success of the lesson

The relationship with the family

Don't know yourself, -

Being able to express yourself comfortably

The anxiety of the exam

The fear of school

Stress,

Methods of studying,

Decision-making skills,

Higher Education Institutions Exam,

Our guidance service provides services on adolescent problems and other psychological, educational or professional issues.

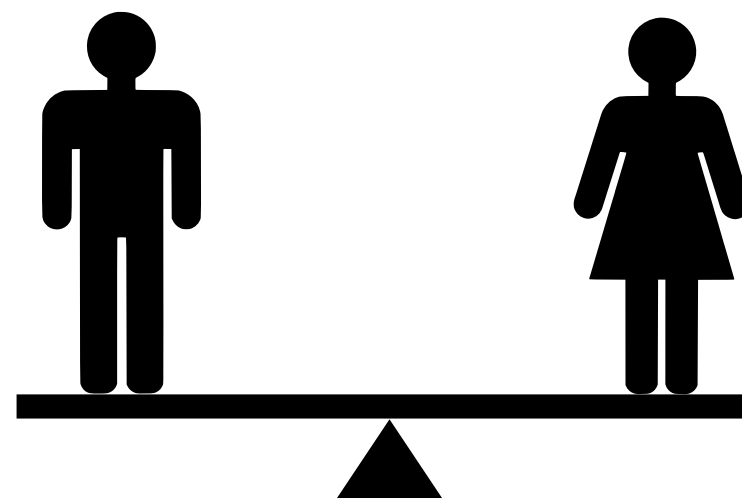
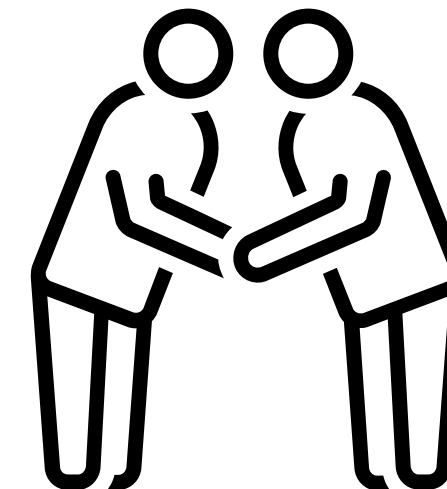
OUR PRINCIPLES

Confidentiality: Interviews are not shared with strangers unless there is a legal situation.



Volunteering: Guidance and Psychological Counseling Services are carried out not by external coercion, but with the voluntary cooperation and participation of the individual.

Human rights are respected and **individual differences** are taken into consideration.



There are students at the center of guidance and psychological counseling services, **all students are considered equal** and valued.



OUR STUDENT STUDIES

To guide our students on personal, educational and professional issues to provide assistance in solving their problems.



Our Works;

1- Classroom studies

2-Seminar studies

3-Individual student interviews



4- It is carried out in the form of group studies.

INDIVIDUAL AND GROUP STUDENT INTERVIEWS



We conduct interviews with our students on personal, educational and professional issues.

"IŞKUR
professional
orientation test
battery for
choosing a
profession"



We apply an online professional orientation test that will enable students to make the right career choice by learning about their abilities, personality and professional orientations. Employment and Employment Agency (IŞKUR) to find jobs suitable for their qualifications for workers and to find qualified workers suitable for their jobs for employers"

OCCUPATIONAL TESTING FROM THE TEST SURVEY SITE

OCCUPATIONAL MATURE TEST

Our online tests that we use in choosing a profession





Learning techniques

01

ANKI

02

QUIZLET

We use the applications that enable us to use the active recall technique, one of the most permanent learning methods in the world, effectively in educational guidance studies. In this way, we prevent the learning losses of our students.



OUR PARENT STUDIES

This includes the introduction of our Guidance Service and our studies to our parents, the exchange of information and orientation studies that we do in order to take a common attitude with our parents in the approach to our students, the seminar studies for our parents.

Our Family Trainings



To our volunteer parents;
Family communication skills,
Moral development,
Peer relations,
Addiction,
Conscious and safe use of technology,
Conflict and stress management,
Social and emotional development,
**We provide trainings on healthy
nutrition issues.**



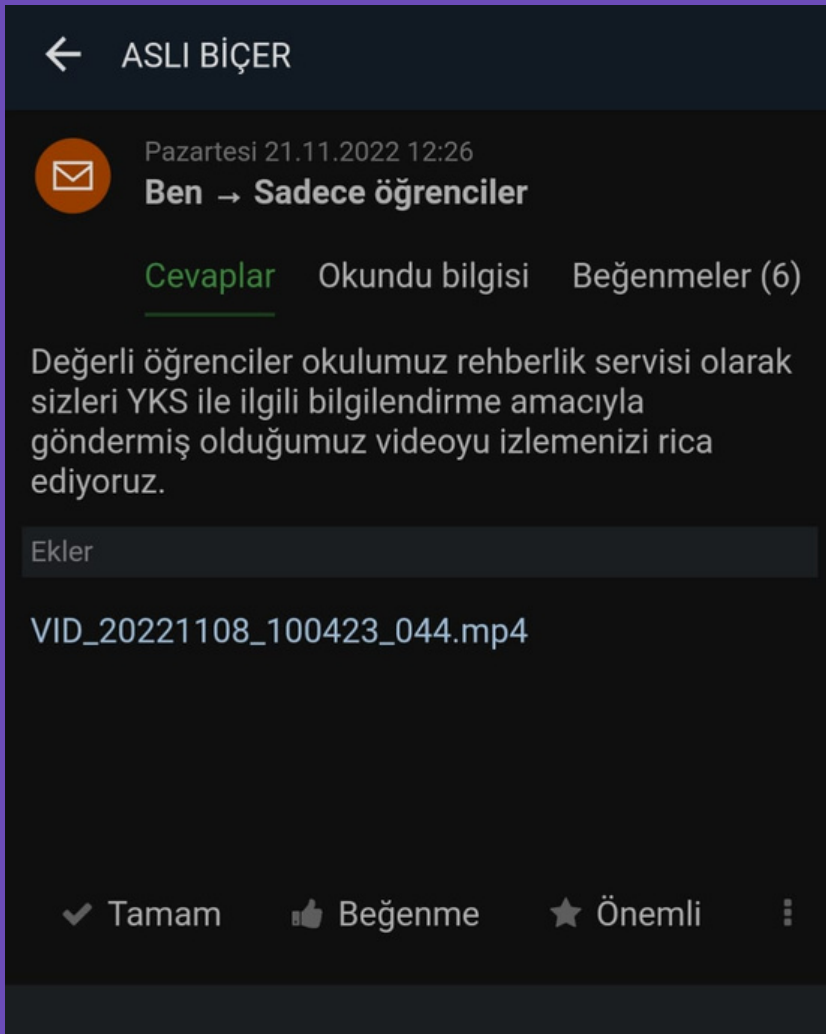
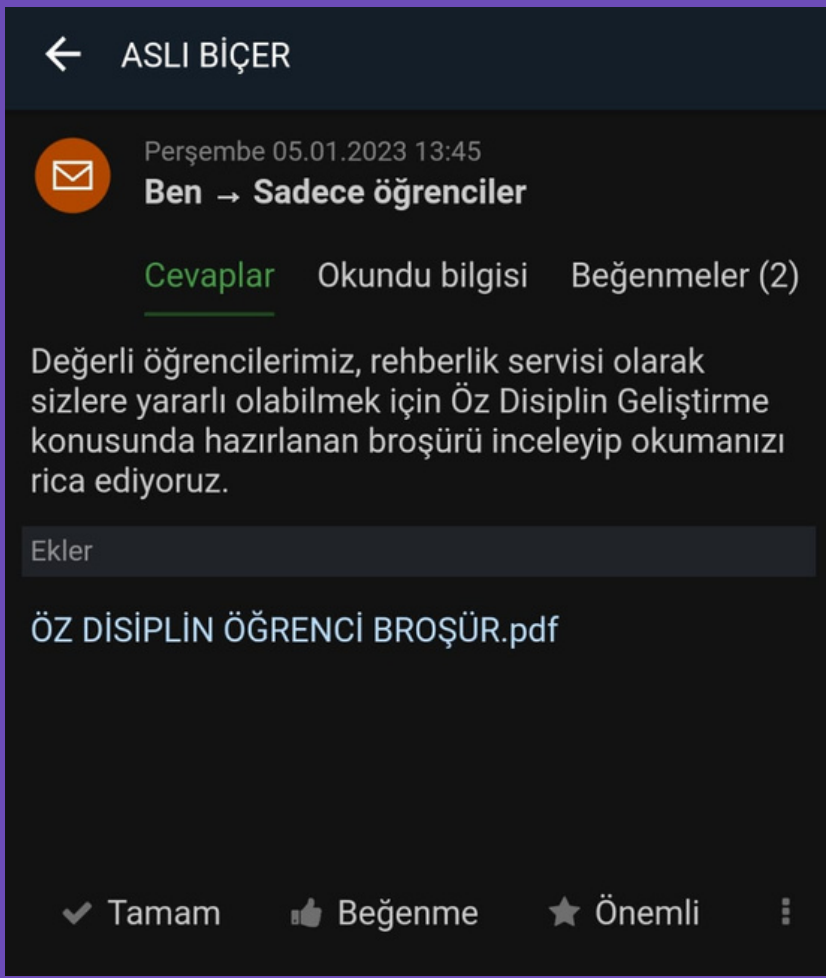
Our Home Visits

**Single parenthood,
Discontinuity,
The problem of adaptation to school,
Lack of school-parent cooperation,
Behavioral problems,
Various diseases,
In cases such as course success/failure, we make
home visits in order to observe the family
atmosphere in order to get to know the student
better.**

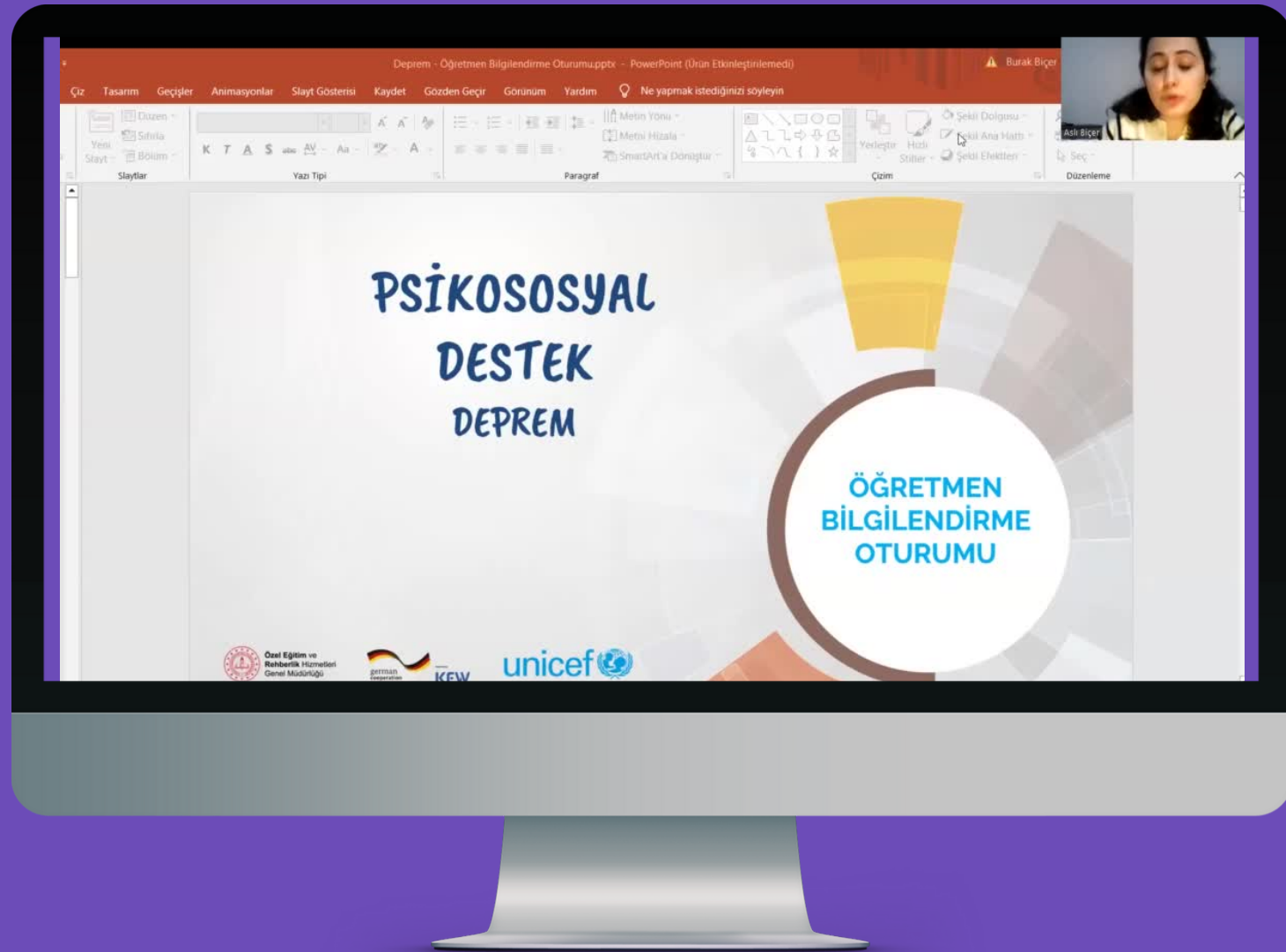
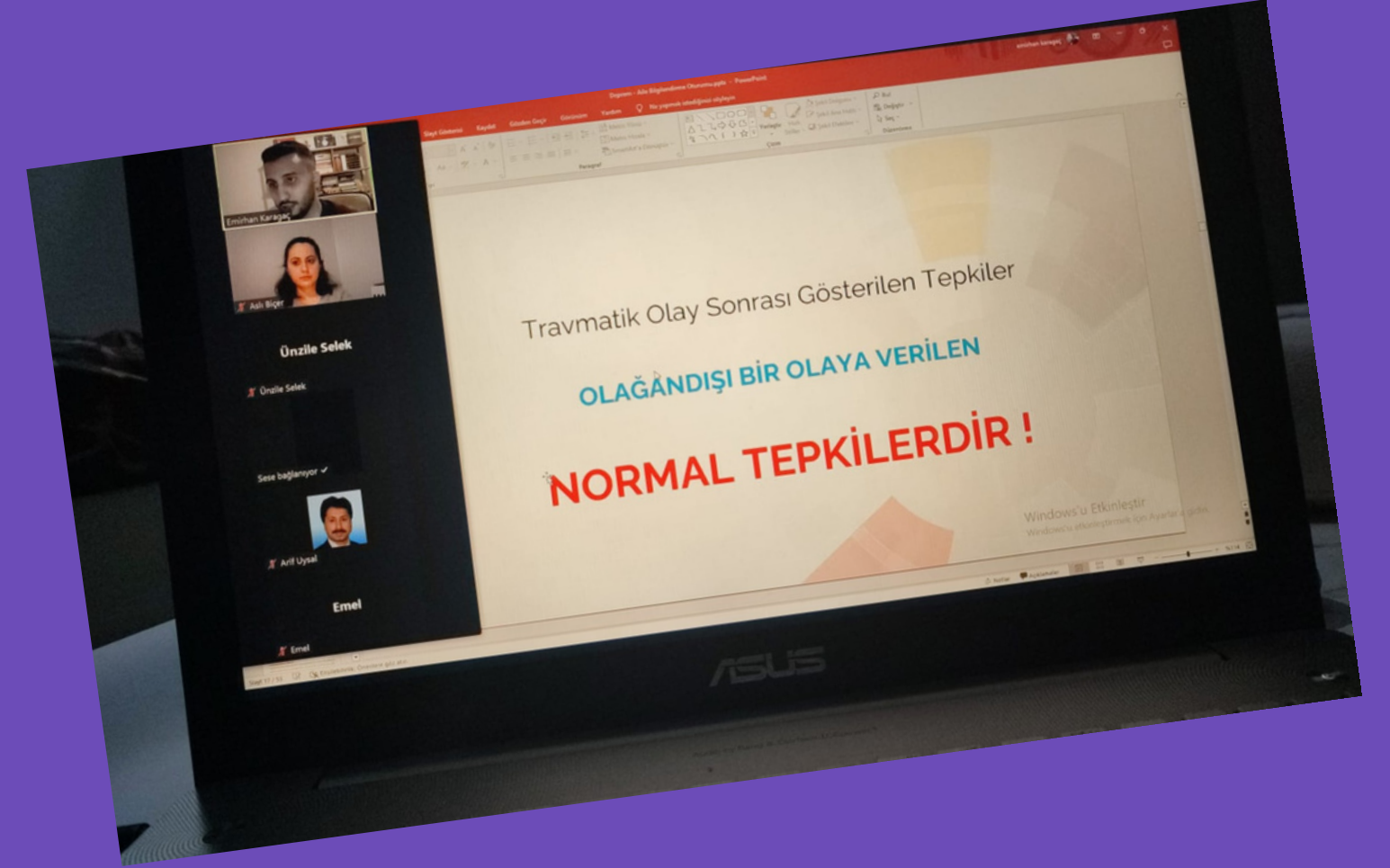
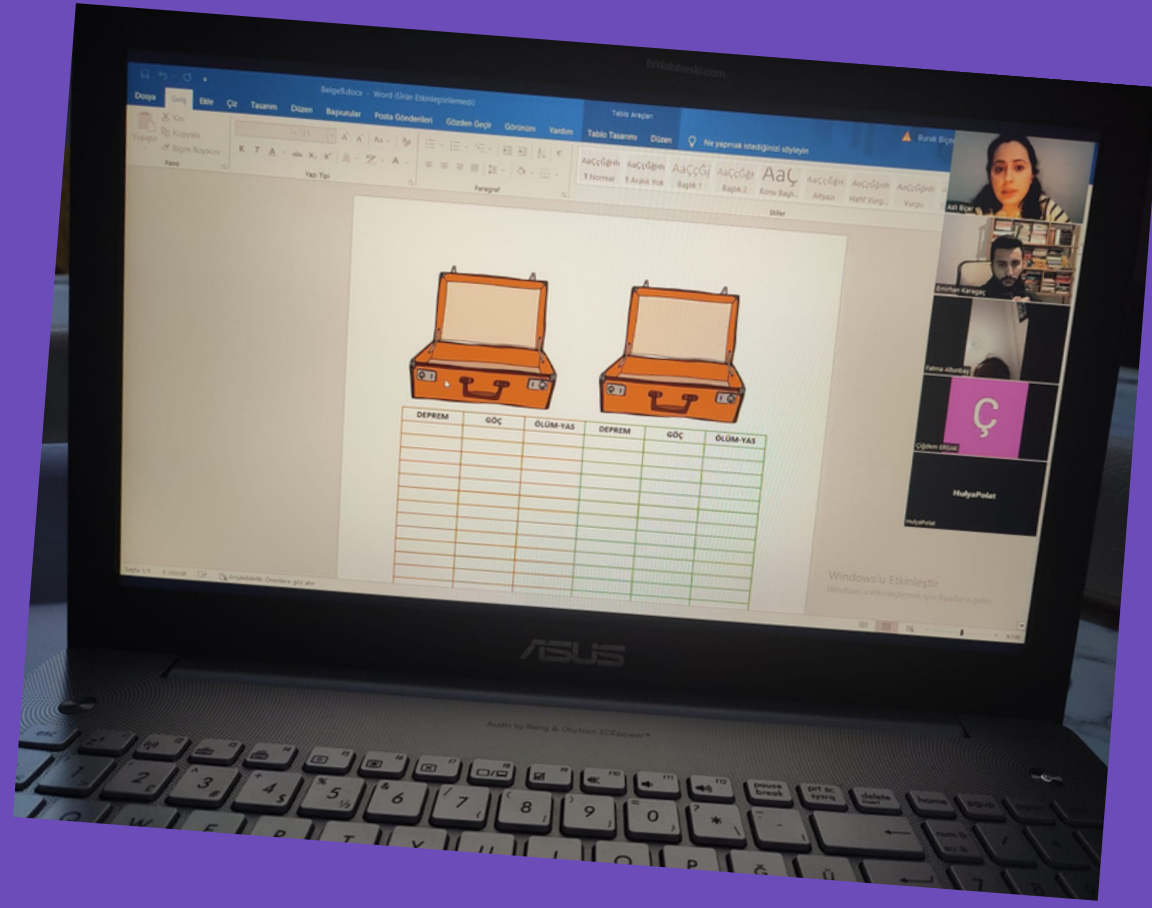


Information Brochures and Newsletters

We send the informational articles we have prepared to our students, teachers and parents using various tools such as canva via the Edupage system.



ONLINE SEMINARS



In order to understand the psychological effects of the traumatic event we experienced due to the earthquake disaster in our country recently, we organized psychoeducation studies for our teachers and parents via zoom.



OUR TEACHER STUDIES

The school guidance counselor works in close cooperation with the administration and teachers within the school. Teachers who are in direct and regular communication with the student identify special needs in order to share them with the guidance and Psychological Counseling Service. Guidance and Psychological Counseling Service we organize individual or group interviews with students in accordance with these needs.



Thanks for listening

